

Version 4.0.3 (released Version)

Change:

- Scroll wheel support for tables
(activated by default, can be optionally deactivated in Tool32.ini, section [KONFIGURATION] with entry NO_SCROLL_WHEEL=1)

Bugfix:

- Run-Time-Errors fixed (RTE 6 and 9)
- When using \$2E jobs after the use of \$2F or \$31 jobs, the arguments for the \$2E jobs now are shown correctly in the "Argument wizard"

Version 4.0.0 (released Version)

Change: none

Bugfix:

- Improved text display when Chinese character set is used

Version 3.9.2 (released version)

Change:

- Argument wizard: multi selection with job STEUERN_LESEN must be selected
- Argument wizard: direct job execution form wizard implemented

Bugfix: none

Remarks:

- Online help actualized and reviewed

Version 3.9.0 (released version, Ediabas package)

Change:

- UDS-Check matches actual ZEDIS conventions (DATA, TEXT; DUMMY_...)
- Testrun now enables jumps to other *.tst files, this enables testruns with more than 15 lines, *.tst files must be in Ediabas ECU directory, put *.tst filename WITHOUT path and extension to column L:Ja or L:Nein
- New pictures in JPG format integrated

Bugfix:

- Error messages in UDS wizard in English
- UDS-Check handles data type BITFIELD in table SG_FUNKTIONEN

Remarks:

- Online help is not actualized

Version 3.8.7 (released version, Ediabas package)

Change: Ediabas help based on CHM files

Bugfix: none

Version 3.8.6 (released version, distribution on GIS)

Change: background picture, Tool32.bmp not required anymore

Bugfix: some minor bugfixes

Version 3.8.2 (Bugfix)

Bugfix: Filling argument fields when opening the argument wizard

Bugfix: correction of help IDs in help menu, 4k limit for result output

Change: background picture disappears after click and does not "move away" anymore

Version 3.8.0 (released version)

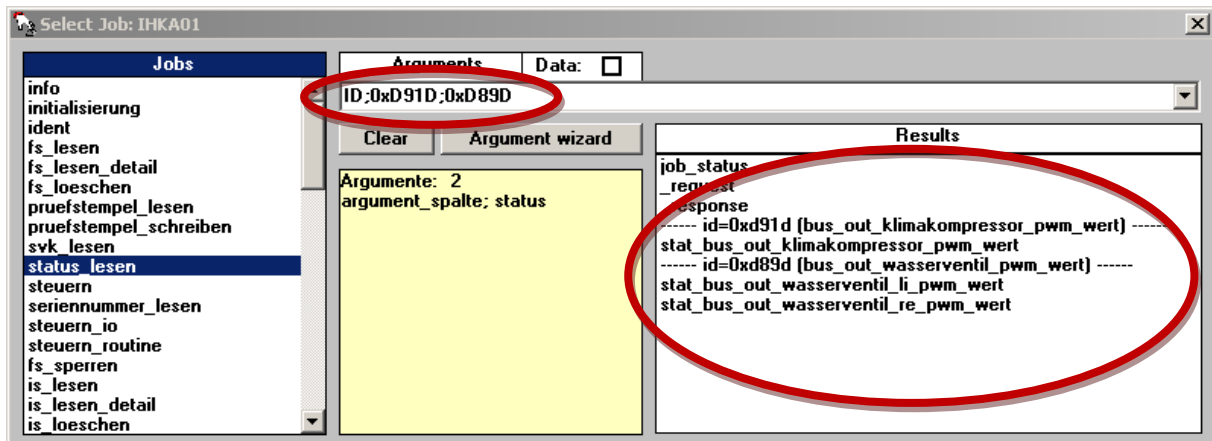
The changes concern mainly the improved support in conjunction with UDS standard jobs.

The following is new:

- Informative display of results for UDS standard jobs
- Filtering of results for UDS jobs for output in result window
- Argument wizard for UDS standard jobs
- UDS check in file menu
- Preferred sequence of important tables in table window
- Size of some windows can no longer be changed
- New functions in Help-Menu (links)
- Delay function for test run

1. Informative display of results for UDS-Standard-Jobs

If one of the 4 standard jobs (STATUS_LESEN, STEUERN, STEUERN_IO, STEUERN_ROUTINE) is selected for UDS, the expected results are shown in addition due to the arguments contained in the argument line.



Example for Job STATUS_LESEN

In principle, it is possible to assign several arguments to the job STATUS_LESEN (although this is not supported by all control units). Consequently, the results of several DIDs are displayed. Headline per DID (starting with „-----„ as well as the results and the number of tables if result tables have been defined.

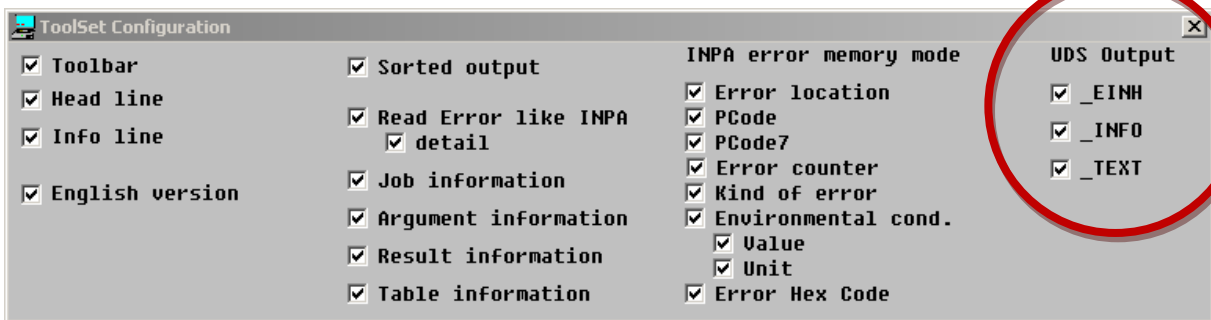
For the job STEUERN_ROUTINE the results are shown in filtered form depending on the control parameter (STR, STPR or RRR).

Note: Of the additionally generated lines, no selections are passed on to Ediabas when the job is called. This is only done for the results in front of the first line starting with „----„.

2. Filtering of results for UDS jobs for output in result window

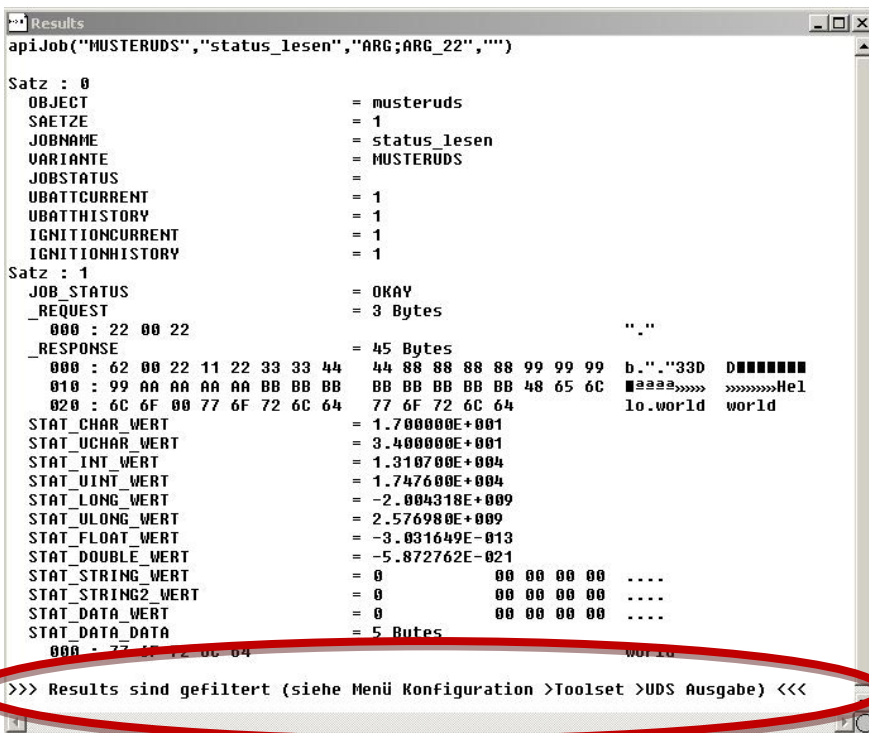
It is possible to limit the results that are displayed in the result window after a job has been carried out. This applies for all jobs in SGBDs that contain table SG_FUNKTIONEN.

Certain result endings can be filtered via selection in the configuration.



Configuration toolset (no tick means filtered)

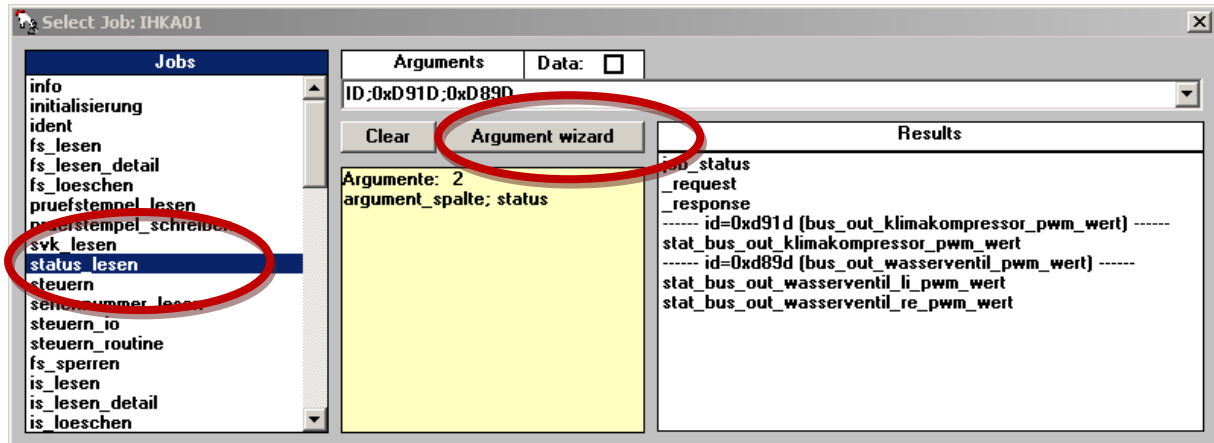
If filtering is active, a corresponding remark is shown at the end of the output in the result window.



Output of results filtered

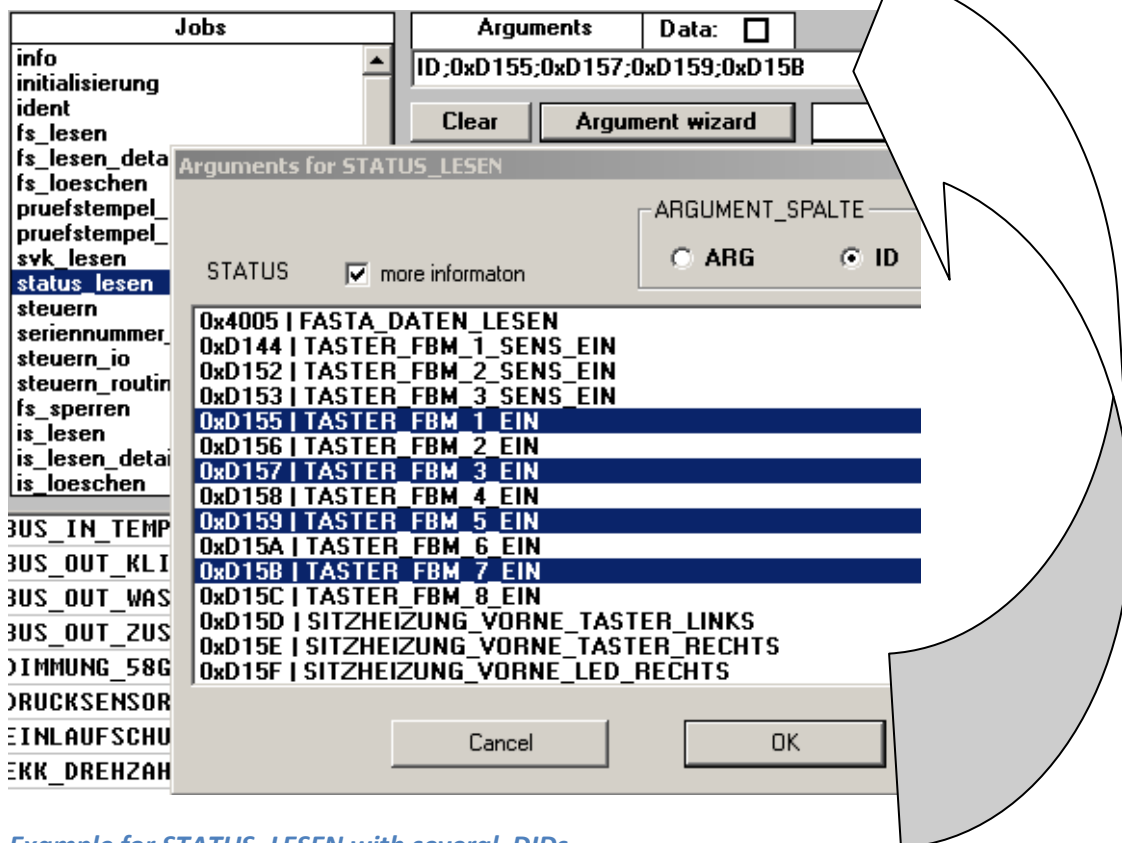
3. Argument assistant for UDS standard jobs

If one of the 4 standard jobs (STATUS_LESEN, STEuern, STEuern_IO, STEuern_ROUTINE) for UDS has been selected, you can activate the "Argument wizard" for easy input into argument entry line. The dialogue is a modal window. It must be closed before the other functions in Tool32 can be used.



Activation of argument wizard

The dialogue for STATUS_LESEN allows you to select several DIDs, which are subsequently used as arguments. When using this option, please keep in mind how many DIDs can be processed by the control unit.



Example for STATUS_LESEN with several DIDs

The dialogue for STEUERN.... jobs allows you to select one individual DID and enter the other corresponding arguments.

Arguments for STEUERN

ARGUMENT_SPALTE

STATUS more information

ARG ID LABEL

STEUERN_EINZELADRESSIERUNG | 0xD978

WERT

ARG	DATENTYP	MIN	MAX	EINHEIT	
CURRENT_STEPPER_ADDRESS	char	-	-	-	12
NEW_STEPPER_ADDRESS	char	-	-	-	256
DIRECTION	char	-	-	0-n	
SAFETY_ENABLE	char	-	-	0-n	
SAFETY_DIRECTION	char	-	-	0-n	

Neue Adresse des zu programmierenden Klappenmotors. Default 0x3F

0x00 | AKTIVIERT

0x01 | ZU_HOHEN_SCHRITZAHLEN

Cancel OK

Example for STEUERN with several arguments

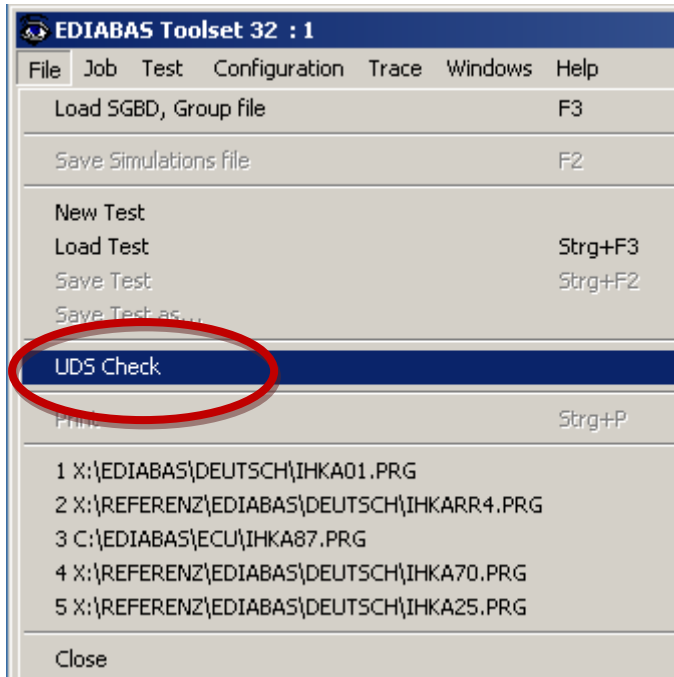
A selection box is displayed for digital and discrete values; for all other data types, an input field is shown.

Notes:

- Display of content of column Info (of respective line selected) in the form of explanatory text.
- Color change if value limits or min/max have been violated or argument has not been entered. This should be seen as information. The final check of the argument is carried out in the standard job and the control unit.
- Fields, which are highlighted red, can be taken over.
- When the dialogue is opened, the system tries to fill out arguments with the current content of the argument input line.
- For the job STEUERN_ROUTINE the arguments are filtered by means of the control parameter.

4. UDS check in file menu

The function for formal checking of UDS SGBDs is now accessible via the file menu.

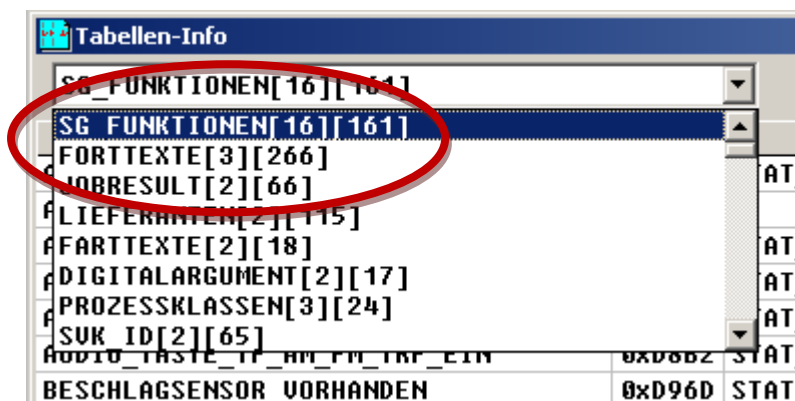


UDS-Check in file menu

The results of the UDS-Check displayed are now language dependent (result window).

5. Preferred sequence of important tables in table window

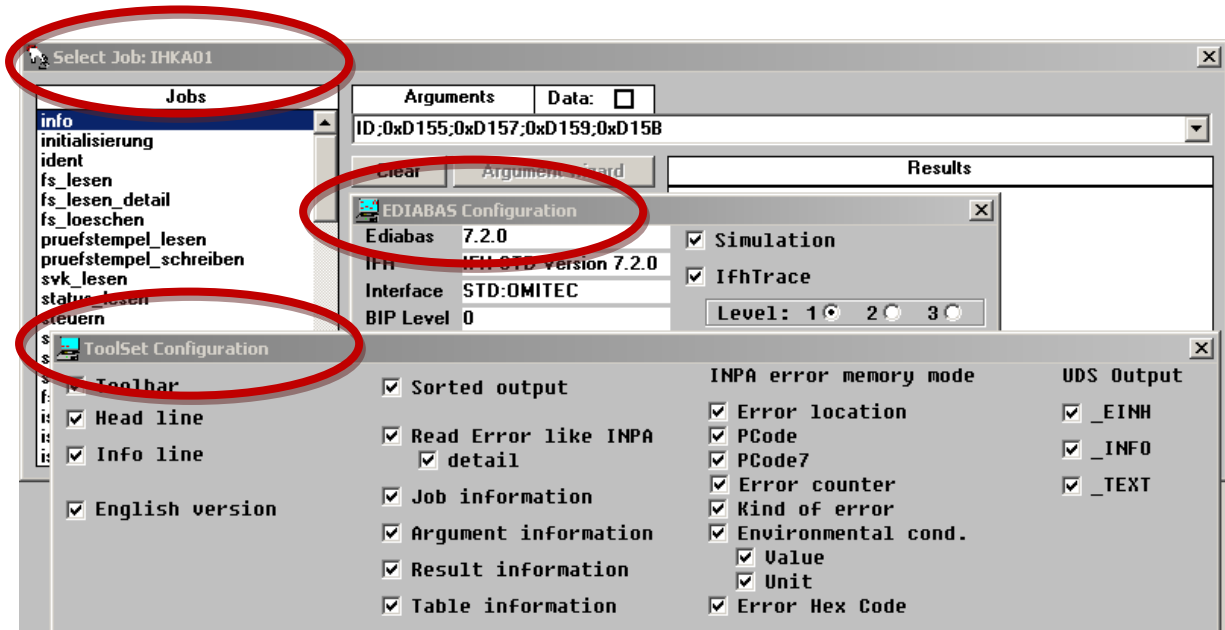
If available in the SGBD, the tables SG_FUNKTIONEN und FORTEXTE are listed at the beginning of the select list. All other SGBDs are listed in the sequence included in the SGBD.



Preferred sequence of tables

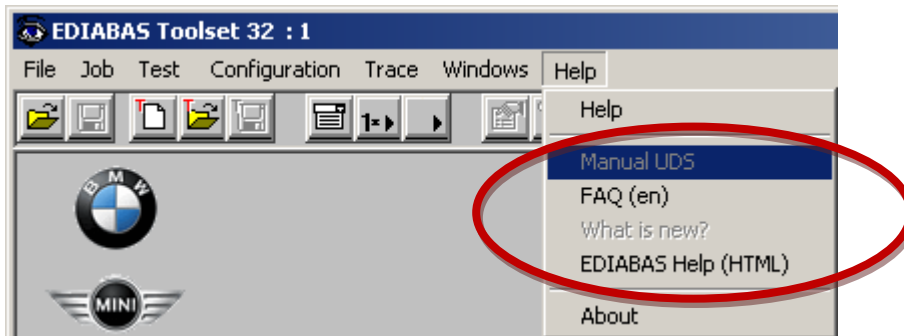
6. The size of certain windows can no longer be changed

The size of the following windows can no longer be changed: Job selection window, configuration toolset and configuration Ediabas.



Size of window cannot be changed any longer

7. New functions in Help menu (Links)



New Links in Help menu

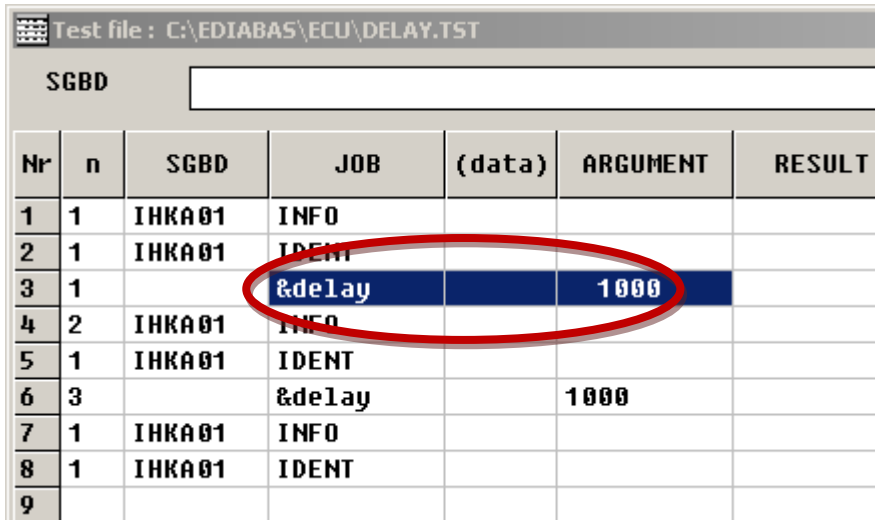
The availability of menu points is controlled via the existence of assigned files and is dependent on the Ediabas installation version used. Effective from Ediabas Version 7.2 (Package >= 1.6) the documents should be available and consequently the menu points activated.

Note:

• *Installation of AcrobatReader is required to display files in PDF format*

8. Delay function for test procedure

It is possible to include delays in the test procedure. For this purpose, the key word "&delay" must appear in the job column. The duration of delay in milliseconds must be entered in the argument column.



Test file : C:\EDIABAS\ECU\DELAY.TST

SGBD

Nr	n	SGBD	JOB	(data)	ARGUMENT	RESULT
1	1	IHKA01	INFO			
2	1	IHKA01	IDENT			
3	1		&delay		1000	
4	2	IHKA01	INFO			
5	1	IHKA01	IDENT			
6	3		&delay		1000	
7	1	IHKA01	INFO			
8	1	IHKA01	IDENT			
9						

Example for use of delay function in test procedure